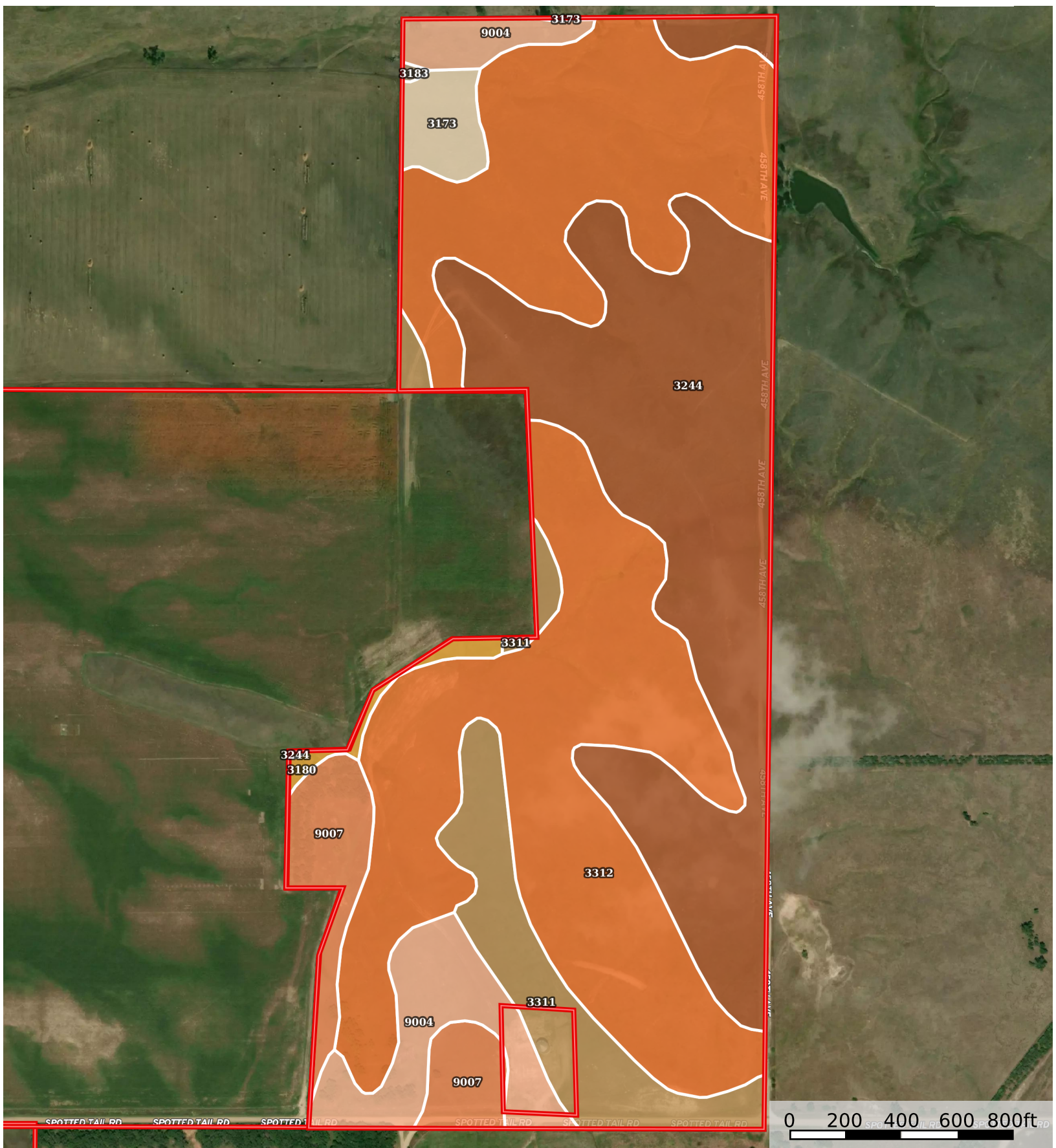


# 480 +/- Acres, Keya Paha County, NE - Auction

Nebraska, AC +/-



 Boundary

Boundary 122.52 ac

SOIL CODE	SOIL DESCRIPTION	ACRES	%	CPI	NCCPI	CAP
3312	Ronson-Anselmo fine sandy loams, 6 to 30 percent slopes	57.94	47.29	0	36	6e
3244	Meadin gravelly sandy loam, 2 to 30 percent slopes	35.61	29.06	0	29	6s
3311	Ronson-Anselmo fine sandy loams, 6 to 11 percent slopes	10.42	8.5	0	42	4e
9004	Anselmo fine sandy loam, 3 to 6 percent slopes	8.64	7.05	54	40	3e
9007	Anselmo fine sandy loam, 0 to 3 percent slopes	6.44	5.26	59	41	2e
3173	Holt-Longpine fine sandy loams, 6 to 11 percent slopes	2.43	1.98	0	34	4e
3180	Jansen fine sandy loam, 0 to 2 percent slopes	0.94	0.77	0	47	2e
3183	Jansen loam, 0 to 2 percent slopes	0.1	0.08	54	43	2s
TOTALS		122.52(*)	100%	6.95	35.07	5.33

(\*) Total acres may differ in the second decimal compared to the sum of each acreage soil. This is due to a round error because we only show the acres of each soil with two decimal.

